



Wichita MSA Air Quality

Ground Level Ozone Formation



Sunlight



Nitrogen Oxides



Volatile
Organic
Compounds



Pollutants “bake” together in
direct sunlight forming ozone.

Health Impacts

- Harmful for sensitive groups
- Worsen bronchitis, emphysema & asthma
- Increases heart disease
- Reduces lung function
- Inflames lung lining
- Chest pain
- Coughing
- Congestion
- Irritation



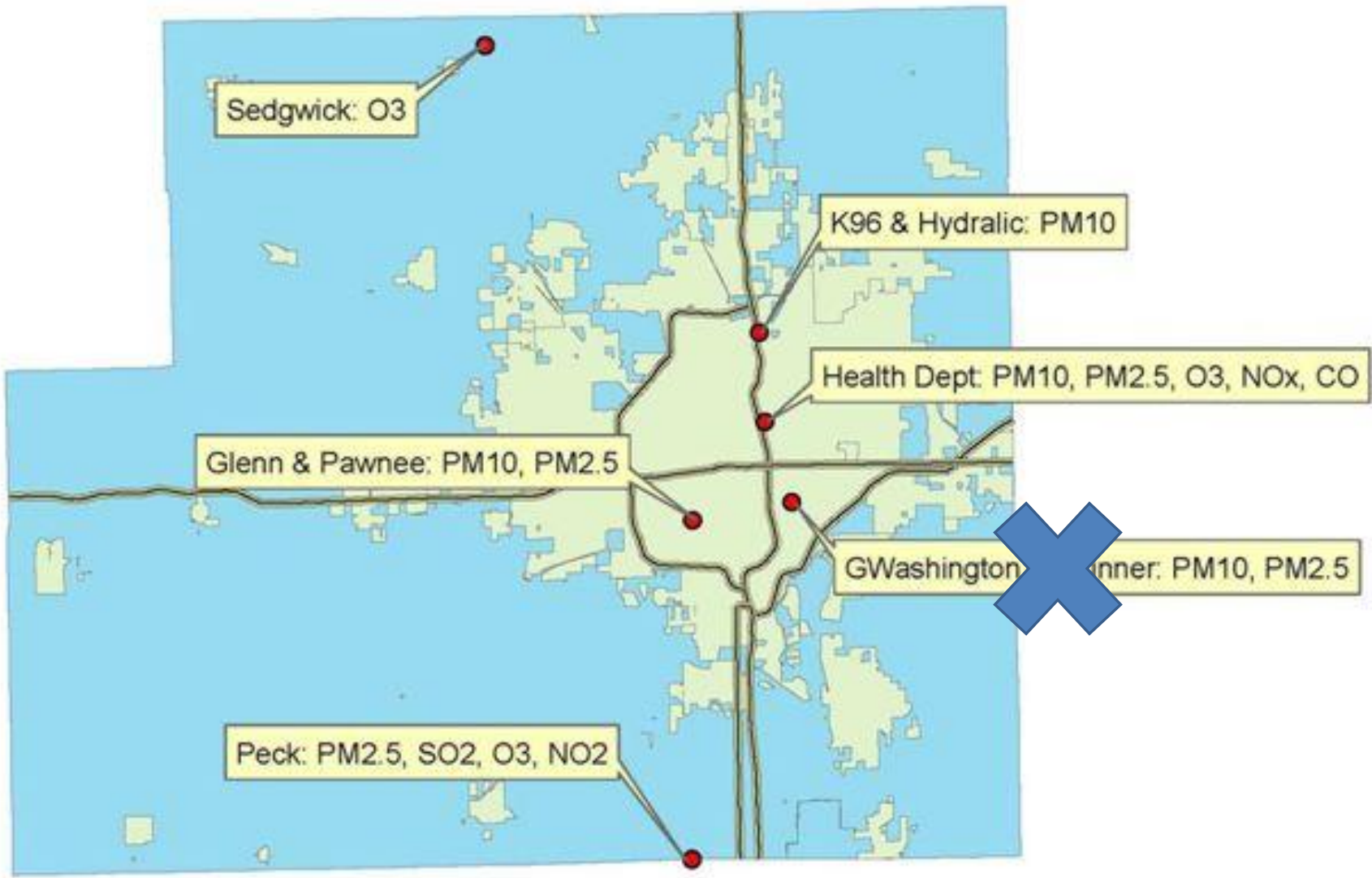
Air Pollutant Monitoring

- PM – particulate matter (PM₁₀ & PM_{2.5})
- SO_s – sulfur dioxide
- NO_s – nitrogen dioxide
- O₃ - ozone



Mike Hutmacher, *Wichita Eagle*





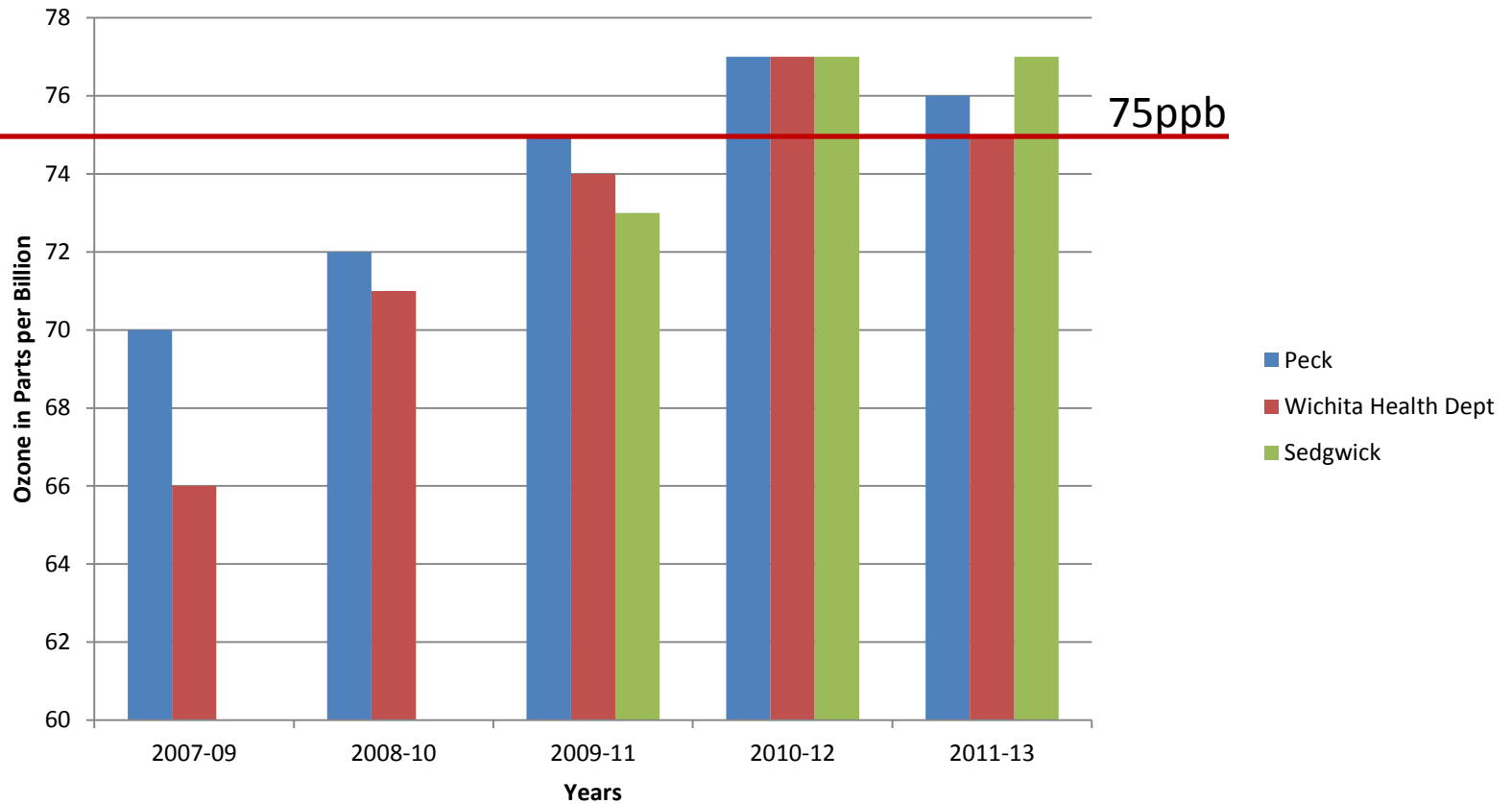
Calculating Ozone

Site	2011 4 th Highest	2012 4 th Highest	2013 4 th Highest	2011-13 3yr Average
Peck	77	81	71	76
Health Dept	76	80	71	75
NW Sedgwick	80	80	71	77

Readings are in parts per billion



Three-Year Averages of the 4th Highest Reading

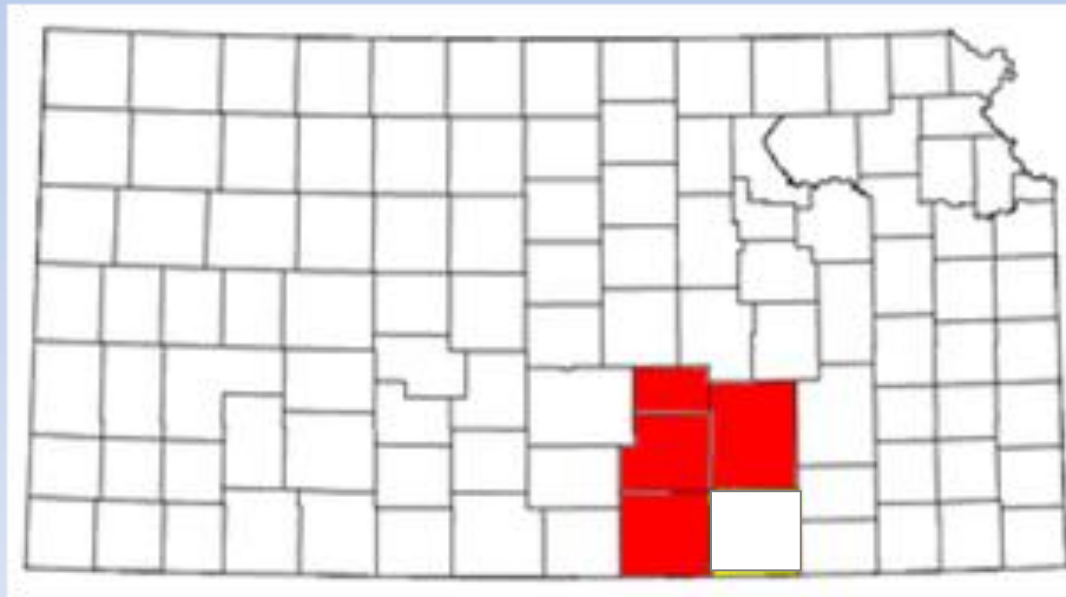


Wichita MSA Ozone

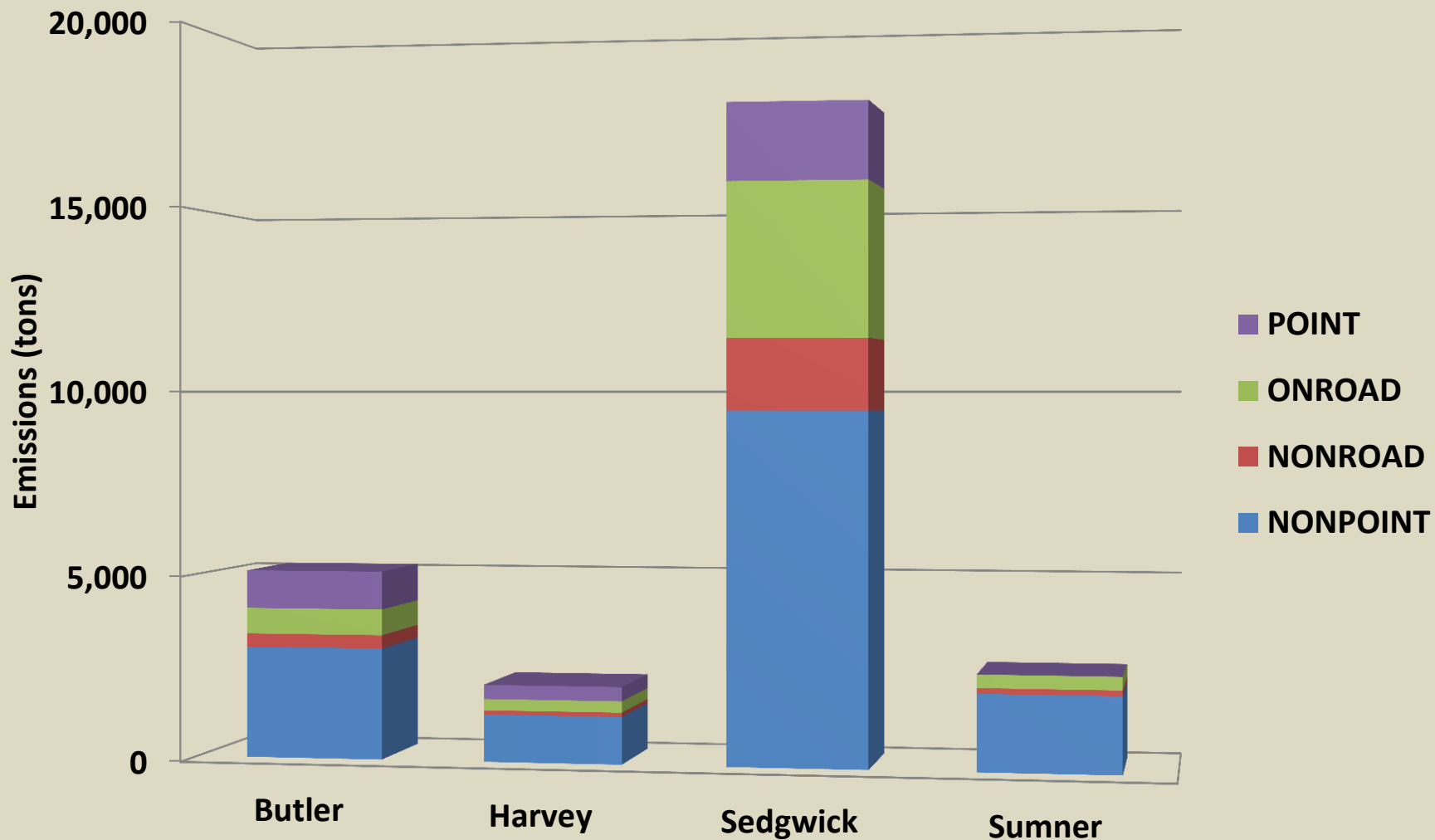


Ozone

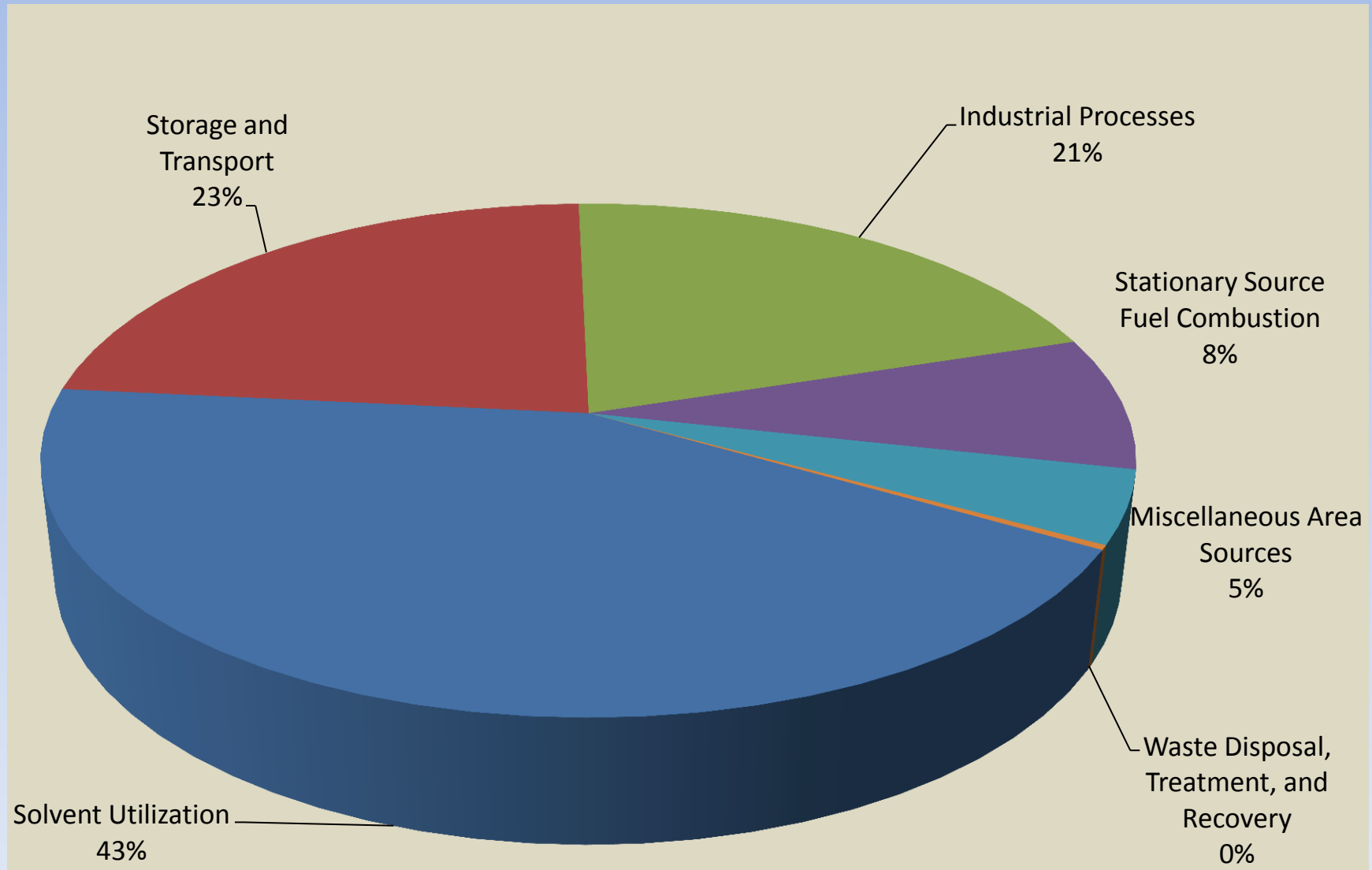
Wichita MSA -
Sedgwick, Butler, Harvey &
Sumner Counties



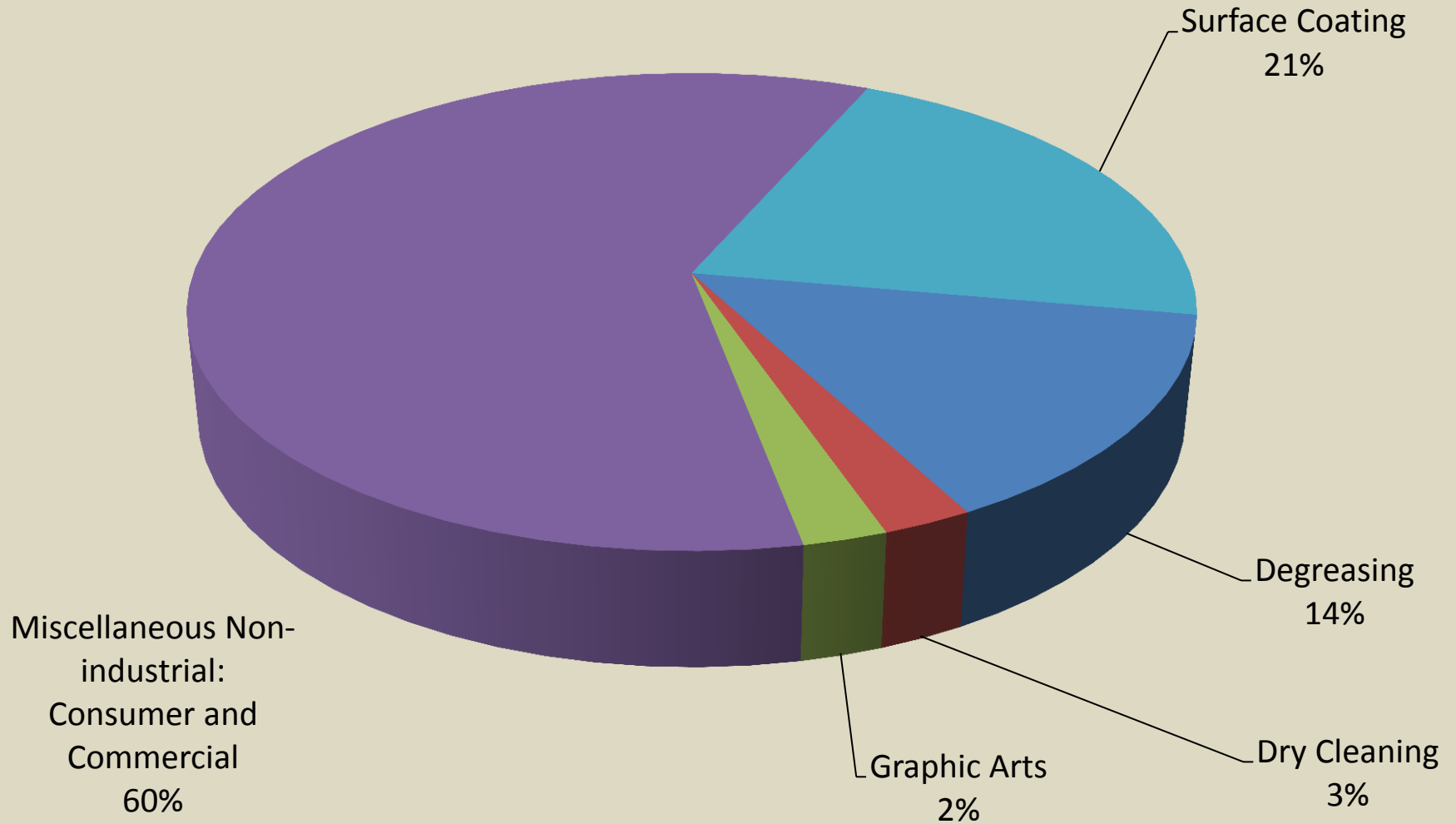
Wichita MSA 2011 VOC Emissions



Wichita MSA 2011 Nonpoint Source VOC Emissions



2011 Nonpoint Solvent VOC Emissions Wichita MSA



Potential Costs of Nonattainment

Costs to Community

- Loss of New Business
- Increased Costs for Businesses
- Road Funding Impacts

Costs to Individuals

- Fuel Costs
- Energy Costs
- Health Care Costs
- Decreased Quality of Life



Sign-up to Receive Ozone Alert Emails


Sign up at

www.tinyurl.com/wichitaozonealert




Don't let clear skies fool you, we
all need to BE AIR AWARE.

An Ozone Alert has been issued for tomorrow. [View this email in your browser](#)



Friday, June 14 is an Ozone Alert Day in the Wichita area including Sedgwick, Butler, Sumner & Harvey Counties.



Ozone Alert

Issued for Friday, June 14

Atmospheric conditions are just right for high ozone levels tomorrow.


If we each do a few small things to reduce our ozone causing emissions it can all add up to clean air.

Actions you can take:

- Mow after 6p
- Fuel before 8a or after 6p
- Stop fueling at the click
- Take your lunch to work - avoid driving during the hottest part of the day
- Turn off the car if idling more than 30 seconds
- Postpone errands or do them when it is cool
- Use paint sprayers early or late, or delay project
- Reduce home energy use

[Click for Current ozone readings](#) [Up-to-date ozone map](#)

[LEARN MORE](#) ➤



Copyright © 2014.
City of Wichita. All Rights Reserved.
Thank you for signing up to receive Ozone Alerts via email from the City of Wichita. All Rights Reserved.

Our mailing address is:
City of Wichita, All Quality
Environmental Health
1900 E 29th St
Wichita, KS 67214

